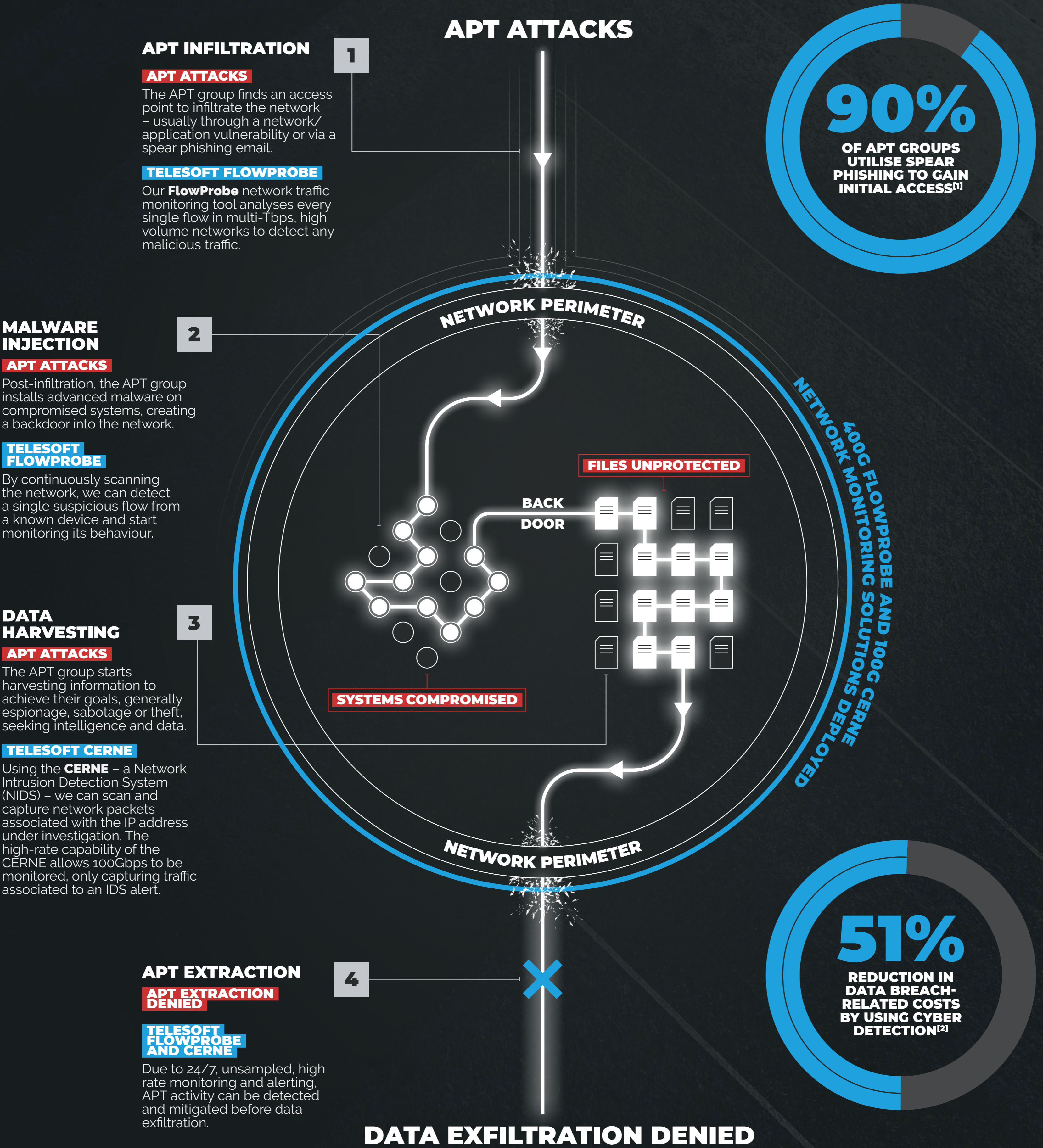


# DETECTING ADVANCED PERSISTENT THREATS

**AN ADVANCED PERSISTENT THREAT (APT) IS A PROLONGED, SUSTAINED ATTACK DELIVERED BY SKILLED USERS USING SOPHISTICATED AND WELL DEVELOPED TOOLS, TECHNIQUES AND PROCEDURES (TTP).**

Here's how a typical APT attack might play out and how Telesoft's Cyber Platform can be used against it.



**TO FIND OUT MORE ABOUT APT ANALYSIS [CLICK HERE](#)**

[1] <https://www.ptsecurity.com/ww-en/analytics/advanced-persistent-threat-apt-attack-cost-report/>

[2] <https://www.darkreading.com/vulnerabilities--threats/cyber-deception-reduces-data-breach-costs-by-over-51--and-soc-inefficiencies-by-32-/d-id/1338910>